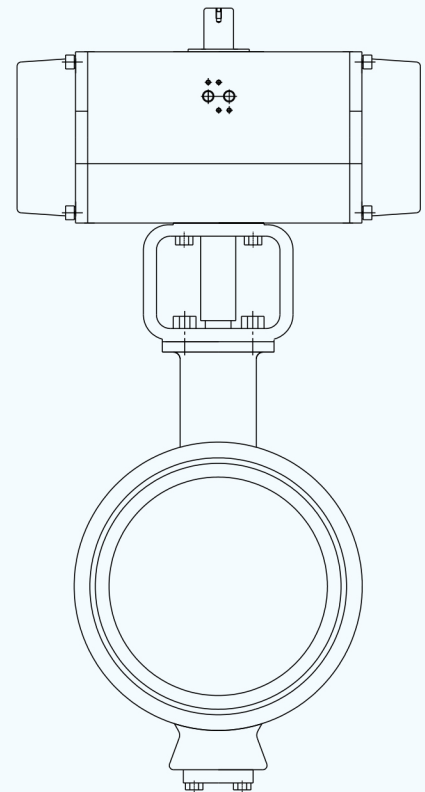
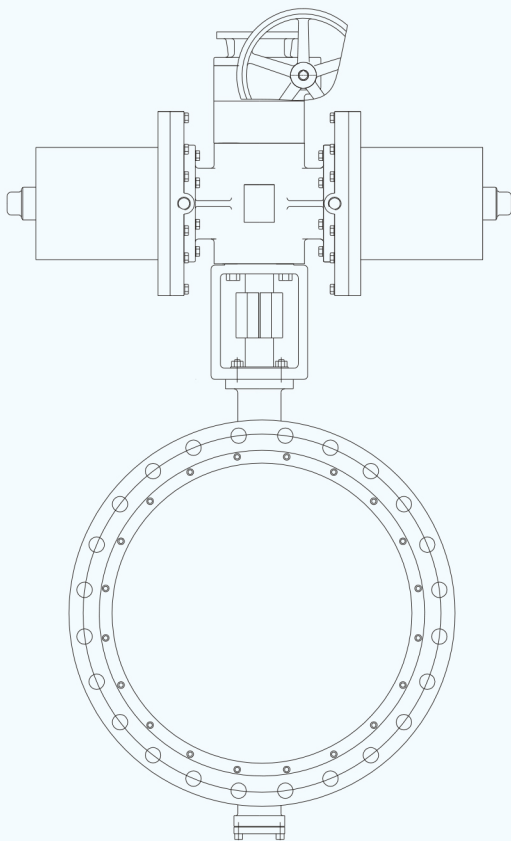


三偏心金属密封蝶阀 Triple Offset Butterfly Valve

B310 Series



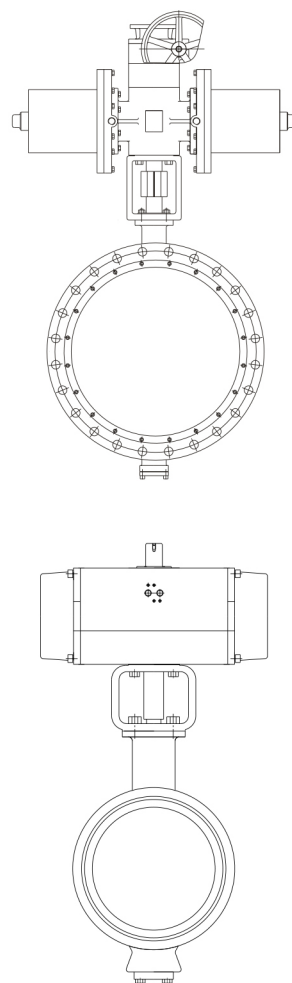
B310 三偏心金属密封蝶阀

B310 Triple Offset Butterfly Valve

概述 Abstract

B310 系列三偏心金属密封蝶阀，采用独特的三偏心结构，阀板与座环之间实现零摩擦，中间动作过程线面接触。金属弹性阀座设计符合API 607 4th标准，防火灾耐高温。该阀特别适用于水、蒸汽、气体及各类油品的流量和压力的调节或切断控制。

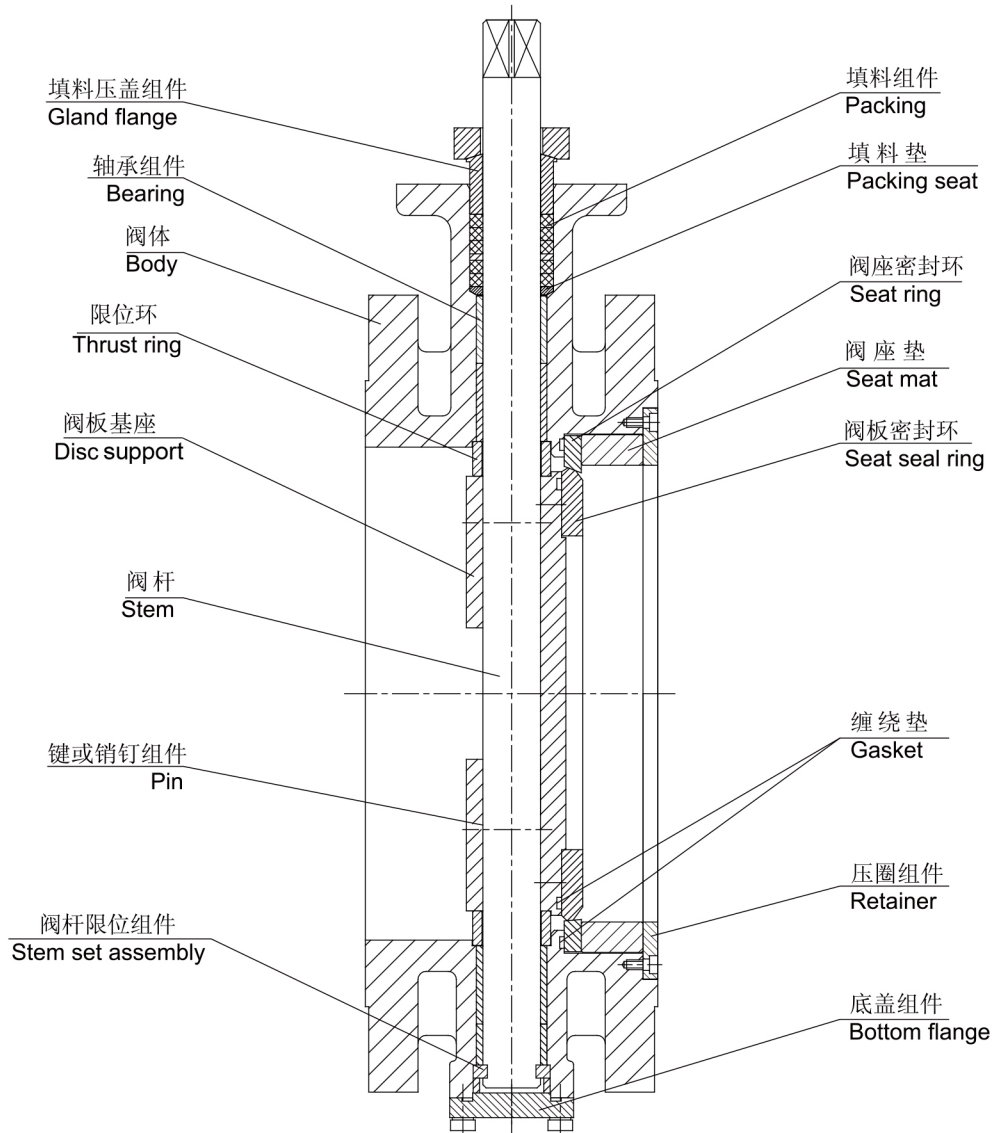
B310 series high performance triple offset butterfly valve has construction of three eccentrics. Zero friction between disc and seating ring. Zero leakage because of double-sealing. The design of elasticity metal-seated accords standard of API 607 4th. It is very suitable for the control of flux and pressure about water, oil and so on.



标准规格 Specification

阀体 型式 Body Type	偏心锥面型 Triple Offset Type
公称 通径 Valve Size	80A~2000A (3B~80B)
压力 等级 Rating	PN1.6~PN26MPa/ANSI150~1500Lb
连接 方式 Connections	对夹式、支耳式、法兰式 WF、Luged、Flanged
阀体 材料 Materials	SCPH2/WCB, SCPH21/WC6, SCS13/CF8, SCS14/CF8M, SCS16A/316L, Duplex, Inconel, Alloy, Hastelloy, Monel, C5, Ti, etc
阀板 材料 Disc Materials	SCS13/CF8, SCPH21/WC6, SCS14/CF8M, SCS16A/CF3M, etc
密封环材料 Seat Ring	304SS/ST, 316SS/ST, 316LSS/ST, etc
上 阀 盖 Bonnet	标准型STD:-60~450°C; 高温型EXT:450~750°C; 低温型LoN:-196~-60°C; 蒸汽夹套型Jacket
流量 特性 Characteristic	固有特性 Inherent
阀座泄漏率 Seat Leakage	ANSI CLASS V & VI (特殊设计下可零泄漏)

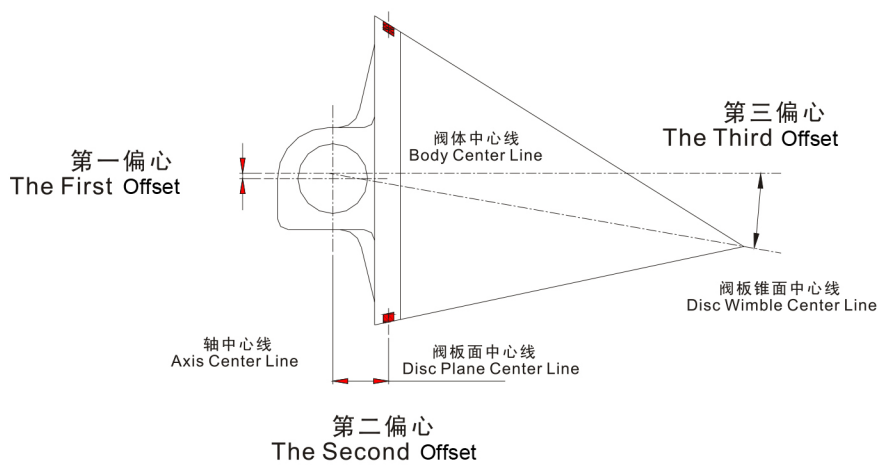
阀体结构 **Body Constructions**



三偏心原理 Element

高性能三偏心金属硬密封蝶阀，在双偏心蝶阀的基础上，阀板锥面中心线与阀体中心线形成第三偏心，其特征在于：所述阀座由不锈钢堆焊硬质合金而成，阀板与阀座的密封为斜圆锥结构，线面接触实现零摩擦，避免其他偏心结构中小开度死区现象，阀座的浮动性及圆锥密封表面堆焊硬质合金材料可促使阀门在高温及有颗粒场合能有效的工作；阀座与阀体之间垫有弹性密封材料，这种结构有效地补偿了轴套与阀体之间的公差带及阀杆在介质压力下的弹性变形，解决了阀门在双向互换的介质输送过程中存在的密封问题。

The characteristic of three-eccentric butterfly valves: the has DS of stainless steel, and it has struction of taper between disc and seat. The surface contacts the line, and the friction is avoided, and the dead space is avoided at the same time in other eccentric control valves. Seat's floating and DS of taper accelerate the valve works effective when the valve's work circumstance are granule. There has elasticity materials between seat and body, and this construction compensates the elasticity distortion, which is brought by the axes cover、 body tolerance and stem because of the pressure of medium. At the same time, the three-eccentric construction makes the valve sealing well when the crossing-over medium in transportation processing.



和开度对应的额定Cv值 Rated Cv

1.Body Rate: PN20/ANSI150Lb

口径 Size		额定Cv值 Rated Cv		口径 Size		额定Cv值 Rated Cv	
mm	inch	60°Open	90°Open	mm	inch	60°Open	90°Open
80	3	120	245	700	28	12380	25800
100	4	215	440	800	32	16170	33670
125	5	340	720	900	36	20470	42640
150	6	590	1230	1000	40	25270	52640
200	8	1030	2140	1100	44	30550	63640
250	10	1690	3510	1200	48	36370	75760
300	12	2300	4790	1350	54	46020	95880
350	14	3095	6450	1500	60	56850	118440
400	16	4040	8420	1600	64	63600	132500
450	18	5120	10660	1800	72	80450	167800
500	20	6850	13160	2000	80	101280	211000
600	24	9090	18950	--	--	--	--

2.Body Rate: PN50/ANSI300Lb

口径 Size		额定Cv值 Rated Cv		口径 Size		额定Cv值 Rated Cv	
		60°Open	90°Open			60°Open	90°Open
mm	inch			mm	inch		
80	3	110	180	700	28	13480	21500
100	4	200	310	800	32	17630	29500
125	5	320	500	900	36	22640	37600
150	6	515	900	1000	40	27890	46900
200	8	950	1660	1100	44	33680	54500
250	10	1560	2650	1200	48	35800	68900
300	12	2120	3700	1350	54	46500	86600
350	14	2910	5200	--	--	--	--
400	16	3760	6900	--	--	--	--
450	18	4890	9100	--	--	--	--
500	20	6200	10500	--	--	--	--
600	24	9830	15800	--	--	--	--

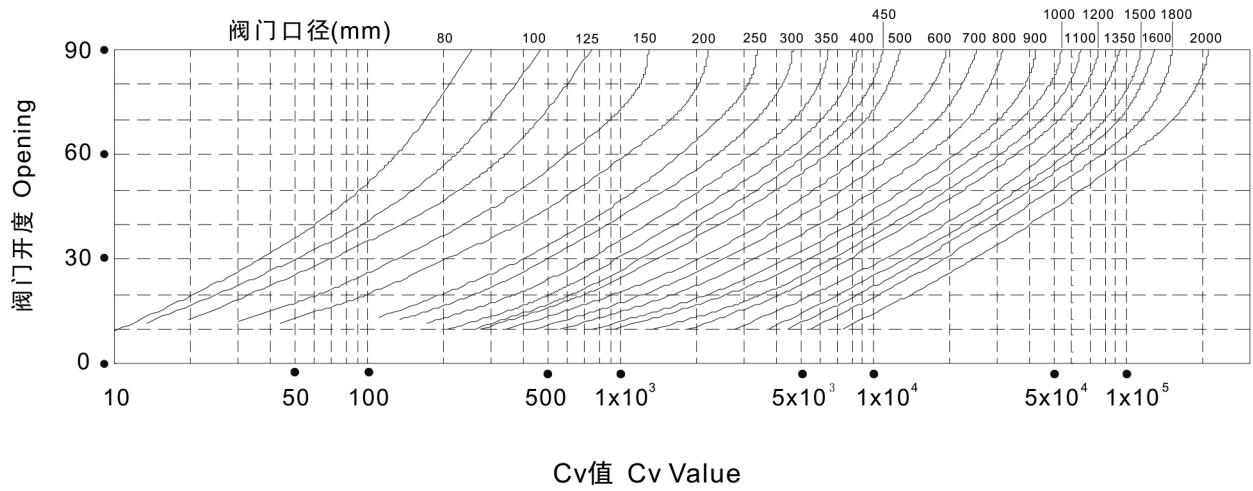
3.Body Rate: PN110/ANSI600Lb

口径 Size		额定Cv值 Rated Cv	
		60°Open	90°Open
mm	inch		
80	3	100	170
100	4	190	295
125	5	275	440
150	6	480	690
200	8	880	1300
250	10	1390	2400
300	12	1980	3500
350	14	2780	4870
400	16	3630	6650
450	18	4910	8100
500	20	6120	9610
600	24	8650	14900
700	28	9580	16000
800	32	11200	17800

4.Body Rate: PN160/ANSI900Lb

口径 Size		额定Cv值 Rated Cv	
		60°Open	90°Open
mm	inch		
80	3	90	155
100	4	160	270
125	5	235	390
150	6	400	650
200	8	700	1150
250	10	1060	2100
300	12	1650	2700
350	14	2240	3670
400	16	3000	4800
450	18	3900	6300
500	20	4730	7520
600	24	6980	11500
700	28	8480	13600
800	32	10100	15500

流量特性曲线图 **Flow Characteristic**



三偏心硬密封蝶阀材料常用组合 **B310 Materials Combination**

阀体 :WCB
Body Material:WCB

阀本体材质 Body Materials		A216-WCB、ZG230-450		
阀板 Disc	材质 Materials	CF8		
	处理 Treatment	堆焊司太莱合金 DS		
阀杆 Stem	材质 Materials	2Cr13	630SS	304SS
	处理 Treatment	热处理 Heat Treat	析出硬化处理 PH	镀铬 HCr
压圈 Retainer	材质 Materials	304SS		
轴承 Bearing	材质 Materials	304SS, 316SS		
	处理 Treatment	渗氮 Nitriding		
密封环 Seal ring	材质 Materials	304SS		
	处理 Treatment	堆焊司太莱合金 DS		
使用温度(°C) Operating Tempe.		-60~450		

阀体材质: WCB、CF8 阀板材质: CF8
 Body Material: WCB Disc Material: CF8

阀本体材质 Body Materials		A216-WCB/ZG230-450, A351-CF8	
阀板 Disc	材质 Materials	304SS, 316SS	
	处理 Treatment	堆焊司太莱合金 DS	
阀杆 Stem	材质 Materials	630SS, 316SS , Inconel718	
	处理 Treatment	析出硬化处理 PH (316SS不处理 316SS with no treatment)	
压圈 Retainer	材质 Materials	304SS	
轴承 Bearing	材质 Materials	316SS	外部轴承型 O.B.
	处理 Treatment	渗氮 Nitriding	
密封环 Seal ring	材质 Materials	304SS, 316SS	
	处理 Treatment	堆焊司太莱合金 DS	
使用温度(°C) Operating Tempe.		-60~750	

阀体、阀板材质: CF8M、CF3M
 Body、Disc Material: CF8M、CF3M

阀本体材质 Body Materials		SCS14A/CF8M, SCS16A/CF3M	
阀板 Disc	材质 Materials	316SS, 316LSS	
	处理 Treatment	堆焊司太莱合金 DS	
阀杆 Stem	材质 Materials	316SS, 316LSS , Inconel718	
	处理 Treatment	NON	
压圈 Retainer	材质 Materials	316SS, 316LSS	
轴承 Bearing	材质 Materials	316SS	外部轴承型 O.B.
	处理 Treatment	渗氮 Nitriding	
密封环 Seal ring	材质 Materials	316SS, 316LSS	
	处理 Treatment	堆焊司太莱合金 DS	
使用温度(°C) Operating Tempe.		-60~750	

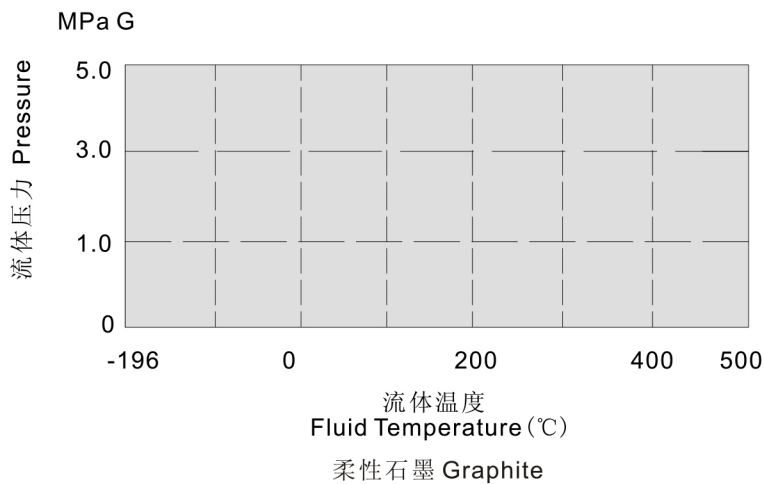
阀体材料温度压力表

Table of Temperature-Pressure Rating About Body Materials

温度℃	ANSICLASS 150#			ANSICLASS 300#			ANSICLASS 600#		
	SCPH2 WCB	SCS13A CF8	SCS14A CF8M	SCPH2 WCB	SCS13A CF8	SCS14A CF8M	SCPH2 WCB	SCS13A CF8	SCS14A CF8M
-193~38		1.9	1.9		4.95	4.95		9.91	9.92
-5~38	1.96	1.9	1.9	5.1	4.95	4.95	10.2	9.91	9.92
50	1.92	1.84	1.84	5	4.77	4.8	10.01	9.56	9.62
100	1.76	1.56	1.61	4.63	4.08	4.21	9.27	8.17	8.43
150	1.57	1.39	1.47	4.51	3.62	3.85	9.04	7.26	7.69
200	1.4	1.25	1.37	4.38	3.27	3.56	8.75	6.54	7.12
250	1.2	1.16	1.2	4.16	3.04	3.34	8.33	6.1	6.67
300	1.01	1.01	1.01	3.87	2.91	3.15	7.74	5.8	6.32
350	0.84	0.84	0.84	3.69	2.81	3.03	7.38	5.6	6.07
375	0.73	0.73	0.73	3.64	2.77	2.96	7.28	5.54	5.93
400	0.64	0.64	0.64	3.44	2.74	2.91	6.89	5.48	5.81
425	0.55	0.55	0.55	2.88	2.71	2.87	5.74	5.42	5.72
450	0.47	0.47	0.47	1.99	2.68	2.81	4	5.37	5.61
475	0.37	0.37	0.37	1.35	2.65	2.73	2.7	5.3	5.46
500	0.28	0.28	0.28	0.88	2.6	2.67	1.72	5.2	5.37
525	0.18	0.18	0.18	0.51	2.19	2.57	1.03	4.77	5.15
538	0.13	0.15	0.15	0.34	2.18	2.53	0.72	4.55	5.06

填料使用温度-压力等级

Packing Temperature-Pressure Rating



执行机构概述 **Actuators**

规格 Spe.	型号Type	
	气缸型 Piston Return	全电子式 Solid Electronic
	AT00、AH00、AW00	EA00
用途 Purpose	单/双动作型 Double	AC电机 分辨率0.4%
气源压力或电源 Sup.	调节/通断 Modulate/On-off	调节/开关 Modulate/On-off
输入信号 Sup.	4.0、5.0Kgf/cm ² G	AC220V 50HZ
气源或电源接口 Conn.	DC4~20mA	
动作 Act	Rc1/4、Rc1/2、RC3/4	G1/2
滞后 Lag.	随输入定位器信号增加阀闭或阀开 正动作气关 D:Close 反动作气开R:Open	正动作:输入信号增加阀闭 Close 反动作:输入信号增加阀开 Open
直线性 Linear	带定位器1.5%FS以内 within 1.5%FS with positioner	1%FS以内 within 1%FS
允许环境温度 Tempe.	带定位器±2%FS以内 within ±2%FS with positioner	±1.5%FS以内 within ±1.5%FS
	-40~+150°C	-10~+55°C

最大允许压差及执行机构选择(单位:MPa)

The Maximal Allowable Pressure Drops and Actuator Selections

阀体压力等级:L、M、H级 Body Rating: L、M、H Class

Shut:阀关闭时允许压差 Shut:On-off

ΔP :60°开度时允许压差 ΔP :Modulate

气源压力:0.4MPa G Air Sup.:0.4MPa G

1.全电子式及电动执行机构最大允许压差请咨询BNV营业部
Contact BNV sales department for pressure drops of solid state electronic and electric motor actuator.

2.气缸型执行机构最大允许压差
Pressure Drop of Piston Return Actuators.

L级阀体 L Body Rating

1.AT/AW/AH双动作执行机构 AT/AW/AH Actuator(Double Action)

口径 Size	状态 State	AT00DA												AW00DA		AH00DA	
		20	25	30	35	40	45	50	55	60	65	70	80	AW 20	AW 28	400	500
80	Shut	0.45	2.25	2.25	---	---	---	---	---	---	---	---	---	---	---	---	---
	ΔP	0.1	0.75	0.75	---	---	---	---	---	---	---	---	---	---	---	---	---
100	Shut	---	0.75	2.25	2.25	---	---	---	---	---	---	---	---	---	---	---	---
	ΔP	---	0.15	0.55	0.75	---	---	---	---	---	---	---	---	---	---	---	---
125	Shut	---	---	1.2	2.25	2.25	---	---	---	---	---	---	---	---	---	---	---
	ΔP	---	---	0.2	0.6	0.75	---	---	---	---	---	---	---	---	---	---	---
150	Shut	---	---	---	1.05	1.05	1.05	---	---	---	---	---	---	---	---	---	---
	ΔP	---	---	---	0.15	0.3	0.3	---	---	---	---	---	---	---	---	---	---
200	Shut	---	---	---	---	0.6	1.65	1.65	---	---	---	---	---	---	---	---	---
	ΔP	---	---	---	---	0.05	0.25	0.4	---	---	---	---	---	---	---	---	---
250	Shut	---	---	---	---	---	0.45	1.05	1.2	---	---	---	---	1.2	---	---	---
	ΔP	---	---	---	---	---	0.05	0.1	0.2	---	---	---	---	0.25	---	---	---
300	Shut	---	---	---	---	---	---	---	0.75	1.35	1.35	---	---	1.35	---	---	---
	ΔP	---	---	---	---	---	---	---	0.05	0.15	0.25	---	---	0.25	---	---	---
350	Shut	---	---	---	---	---	---	---	---	0.6	1.35	1.35	---	1.35	1.35	---	---
	ΔP	---	---	---	---	---	---	---	---	0.05	0.2	0.25	---	0.25	0.25	---	---
400	Shut	---	---	---	---	---	---	---	---	---	0.6	1.5	1.5	1.5	1.5	---	---
	ΔP	---	---	---	---	---	---	---	---	---	0.1	0.2	0.25	0.25	0.25	---	---
450	Shut	---	---	---	---	---	---	---	---	---	0.6	1.35	1.65	1.65	1.65	---	---
	ΔP	---	---	---	---	---	---	---	---	---	0.05	0.1	0.25	0.15	0.25	---	---
500	Shut	---	---	---	---	---	---	---	---	---	---	0.9	1.8	---	1.8	1.8	---
	ΔP	---	---	---	---	---	---	---	---	---	---	0.05	0.2	---	0.25	0.75	---
600	Shut	---	---	---	---	---	---	---	---	---	---	---	1.05	---	1.5	1.5	---
	ΔP	---	---	---	---	---	---	---	---	---	---	---	0.05	---	0.15	0.15	---
700	Shut	---	---	---	---	---	---	---	---	---	---	---	---	---	0.9	1.2	1.35
	ΔP	---	---	---	---	---	---	---	---	---	---	---	---	---	0.05	0.1	0.1
800	Shut	---	---	---	---	---	---	---	---	---	---	---	---	---	0.3	0.45	1.05
	ΔP	---	---	---	---	---	---	---	---	---	---	---	---	---	0.05	0.05	0.1

AT/AW/AH单动作执行机构 AT/AW/AH Actuator(Single Action)

口径 Size	状态 State	AT00SR												AW00SR		AH00SR	
		20	25	30	35	40	45	50	55	60	65	70	80	AW 20	AW 28	400	500
80	Shut	---	---	0.15	2.25	2.25	---	---	---	---	---	---	---	---	---	---	---
	△P	---	---	0.05	0.65	0.75	---	---	---	---	---	---	---	---	---	---	---
100	Shut	---	---	---	1.95	2.25	2.25	---	---	---	---	---	---	---	---	---	---
	△P	---	---	---	0.05	0.55	0.75	---	---	---	---	---	---	---	---	---	---
125	Shut	---	---	---	---	0.6	1.65	2.25	---	---	---	---	---	---	---	---	---
	△P	---	---	---	---	0.1	0.45	0.75	---	---	---	---	---	---	---	---	---
150	Shut	---	---	---	---	---	0.45	1.05	1.05	---	---	---	---	---	---	---	---
	△P	---	---	---	---	---	0.05	0.25	0.3	---	---	---	---	---	---	---	---
200	Shut	---	---	---	---	---	---	---	0.75	1.65	1.65	---	---	---	---	---	---
	△P	---	---	---	---	---	---	---	0.1	0.25	0.55	---	---	---	---	---	---
250	Shut	---	---	---	---	---	---	---	---	0.45	1.2	1.2	---	1.2	---	---	---
	△P	---	---	---	---	---	---	---	---	0.05	0.2	0.25	---	0.25	---	---	---
300	Shut	---	---	---	---	---	---	---	---	---	0.6	1.2	---	1.35	---	---	---
	△P	---	---	---	---	---	---	---	---	---	0.05	0.15	---	0.25	---	---	---
350	Shut	---	---	---	---	---	---	---	---	---	---	0.45	---	1.35	1.35	---	---
	△P	---	---	---	---	---	---	---	---	---	---	0.05	---	0.2	0.25	---	---
400	Shut	---	---	---	---	---	---	---	---	---	---	---	1.5	1.2	1.5	---	---
	△P	---	---	---	---	---	---	---	---	---	---	---	0.15	0.1	0.25	---	---
450	Shut	---	---	---	---	---	---	---	---	---	---	---	0.75	0.6	1.65	1.65	---
	△P	---	---	---	---	---	---	---	---	---	---	---	0.05	0.05	0.25	0.25	---
500	Shut	---	---	---	---	---	---	---	---	---	---	---	---	---	1.8	1.8	---
	△P	---	---	---	---	---	---	---	---	---	---	---	---	---	0.15	0.15	---
600	Shut	---	---	---	---	---	---	---	---	---	---	---	---	---	1.05	0.75	---
	△P	---	---	---	---	---	---	---	---	---	---	---	---	---	0.05	0.05	---
700	Shut	---	---	---	---	---	---	---	---	---	---	---	---	---	---	---	1.35
	△P	---	---	---	---	---	---	---	---	---	---	---	---	---	---	---	0.1
800	Shut	---	---	---	---	---	---	---	---	---	---	---	---	---	---	---	0.9
	△P	---	---	---	---	---	---	---	---	---	---	---	---	---	---	---	0.1

M级阀体 M Body Rating

1.AT/AW/AH双动作执行机构 AT/AW/AH Actuator(Double Action)

口径 Size	状态 State	AT00DA												AW00DA		AH00DA	
		20	25	30	35	40	45	50	55	60	65	70	80	AW 20	AW 28	400	500
80	Shut	0.3	3	3.3	---	---	---	---	---	---	---	---	---	---	---	---	---
	△P	0.1	0.8	1.5	---	---	---	---	---	---	---	---	---	---	---	---	---
100	Shut	---	0.3	2.1	3.6	---	---	---	---	---	---	---	---	---	---	---	---
	△P	---	0.1	0.5	1.3	---	---	---	---	---	---	---	---	---	---	---	---
125	Shut	---	---	---	1.8	3.3	3.3	---	---	---	---	---	---	---	---	---	---
	△P	---	---	---	0.4	0.7	1.4	---	---	---	---	---	---	---	---	---	---
150	Shut	---	---	---	---	1.2	3.3	3.6	---	---	---	---	---	---	---	---	---
	△P	---	---	---	---	0.2	0.6	1	---	---	---	---	---	---	---	---	---
200	Shut	---	---	---	---	---	0.3	1.2	2.4	---	---	---	---	---	---	---	---
	△P	---	---	---	---	---	0.1	0.2	0.4	---	---	---	---	---	---	---	---
250	Shut	---	---	---	---	---	---	---	0.9	2.1	---	---	---	2.7	---	---	---
	△P	---	---	---	---	---	---	---	0.1	0.3	---	---	---	0.8	---	---	---
300	Shut	---	---	---	---	---	---	---	---	---	1.8	3.3	---	3.9	---	---	---
	△P	---	---	---	---	---	---	---	---	---	0.2	0.5	---	0.5	---	---	---
350	Shut	---	---	---	---	---	---	---	---	---	1.2	2.4	---	2.7	3.6	---	---
	△P	---	---	---	---	---	---	---	---	---	0.1	0.3	---	0.3	1.2	---	---
400	Shut	---	---	---	---	---	---	---	---	---	---	1.2	3.3	1.5	4.5	---	---
	△P	---	---	---	---	---	---	---	---	---	---	0.1	0.3	0.1	0.6	---	---
450	Shut	---	---	---	---	---	---	---	---	---	---	---	---	2.4	0.9	3.6	---
	△P	---	---	---	---	---	---	---	---	---	---	---	---	0.2	0.1	0.4	---
500	Shut	---	---	---	---	---	---	---	---	---	---	---	---	---	3	3	---
	△P	---	---	---	---	---	---	---	---	---	---	---	---	---	0.3	0.4	---
600	Shut	---	---	---	---	---	---	---	---	---	---	---	---	---	1.2	1.8	---
	△P	---	---	---	---	---	---	---	---	---	---	---	---	---	0.1	0.1	---
700	Shut	---	---	---	---	---	---	---	---	---	---	---	---	---	---	---	3
	△P	---	---	---	---	---	---	---	---	---	---	---	---	---	---	---	0.3
800	Shut	---	---	---	---	---	---	---	---	---	---	---	---	---	---	---	1.8
	△P	---	---	---	---	---	---	---	---	---	---	---	---	---	---	---	0.2

AT/AW/AH单动作执行机构 AT/AW/AH Actuator(Single Action)

口径 Size	状态 State	AT00SR												AW00SR		AH00SR	
		20	25	30	35	40	45	50	55	60	65	70	80	AW 20	AW 28	400	500
80	Shut	---	---	---	2.4	3.3	---	---	---	---	---	---	---	---	---	---	---
	△P	---	---	---	0.7	1.2	---	---	---	---	---	---	---	---	---	---	---
100	Shut	---	---	---	---	1.2	3.6	---	---	---	---	---	---	---	---	---	---
	△P	---	---	---	---	0.3	0.9	---	---	---	---	---	---	---	---	---	---
125	Shut	---	---	---	---	---	0.9	2.4	---	---	---	---	---	---	---	---	---
	△P	---	---	---	---	---	0.2	0.5	---	---	---	---	---	---	---	---	---
150	Shut	---	---	---	---	---	---	0.6	1.2	---	---	---	---	---	---	---	---
	△P	---	---	---	---	---	---	0.1	0.1	---	---	---	---	---	---	---	---
200	Shut	---	---	---	---	---	---	---	---	---	2.1	---	---	---	---	---	---
	△P	---	---	---	---	---	---	---	---	---	0.3	---	---	---	---	---	---
250	Shut	---	---	---	---	---	---	---	---	---	0.9	1.8	---	2.7	---	---	---
	△P	---	---	---	---	---	---	---	---	---	0.1	0.2	---	0.7	---	---	---
300	Shut	---	---	---	---	---	---	---	---	---	---	---	2.1	1.8	---	---	---
	△P	---	---	---	---	---	---	---	---	---	---	---	0.3	0.2	---	---	---
350	Shut	---	---	---	---	---	---	---	---	---	---	---	1.5	1.2	3.6	---	---
	△P	---	---	---	---	---	---	---	---	---	---	---	0.1	0.1	0.6	---	---
400	Shut	---	---	---	---	---	---	---	---	---	---	---	---	---	3	---	---
	△P	---	---	---	---	---	---	---	---	---	---	---	---	---	0.3	---	---
450	Shut	---	---	---	---	---	---	---	---	---	---	---	---	---	2.4	1.8	---
	△P	---	---	---	---	---	---	---	---	---	---	---	---	---	0.2	0.2	---
500	Shut	---	---	---	---	---	---	---	---	---	---	---	---	---	1.8	1.2	---
	△P	---	---	---	---	---	---	---	---	---	---	---	---	---	0.1	0.1	---
600	Shut	---	---	---	---	---	---	---	---	---	---	---	---	---	---	---	3.6
	△P	---	---	---	---	---	---	---	---	---	---	---	---	---	---	---	0.3
700	Shut	---	---	---	---	---	---	---	---	---	---	---	---	---	---	---	1.5
	△P	---	---	---	---	---	---	---	---	---	---	---	---	---	---	---	0.1
800	Shut	---	---	---	---	---	---	---	---	---	---	---	---	---	---	---	0.6
	△P	---	---	---	---	---	---	---	---	---	---	---	---	---	---	---	0.06

H级阀体 H Body Rating

1.AT/AW/AH双动作执行机构 AT/AW/AH Actuator(Double Action)

口径 Size	状态 State	AT00DA												AW00DA		AH00DA		
		20	25	30	35	40	45	50	55	60	65	70	80	AW 20	AW 28	400	500	600
200	Shut	---	---	---	---	---	---	---	---	0.6	3.6	7.2	---	8.4	---	---	---	---
	△P	---	---	---	---	---	---	---	---	0.12	0.84	1.68	---	1.8	---	---	---	---
250	Shut	---	---	---	---	---	---	---	---	---	1.2	3.6	7.2	4.2	---	---	---	---
	△P	---	---	---	---	---	---	---	---	---	0.24	0.72	1.68	0.84	---	---	---	---
300	Shut	---	---	---	---	---	---	---	---	---	---	1.2	4.2	1.2	---	9	---	---
	△P	---	---	---	---	---	---	---	---	---	---	0.24	0.72	0.24	---	1.68	---	---
350	Shut	---	---	---	---	---	---	---	---	---	---	0.6	3	0.6	5.4	6	---	---
	△P	---	---	---	---	---	---	---	---	---	---	0.12	0.36	0.12	0.84	1.08	---	---
400	Shut	---	---	---	---	---	---	---	---	---	---	---	0.6	---	2.4	3.6	---	---
	△P	---	---	---	---	---	---	---	---	---	---	---	0.12	---	0.36	0.6	---	---
450	Shut	---	---	---	---	---	---	---	---	---	---	---	---	---	1.8	3	6.6	---
	△P	---	---	---	---	---	---	---	---	---	---	---	---	---	0.24	0.36	1.08	---
500	Shut	---	---	---	---	---	---	---	---	---	---	---	---	---	1.2	1.8	5.4	---
	△P	---	---	---	---	---	---	---	---	---	---	---	---	---	0.12	0.24	0.72	---
600	Shut	---	---	---	---	---	---	---	---	---	---	---	---	---	---	---	4.2	4.8
	△P	---	---	---	---	---	---	---	---	---	---	---	---	---	---	---	0.48	0.6

AT/AW/AH单动作执行机构 AT/AW/AH Actuator(Single Action)

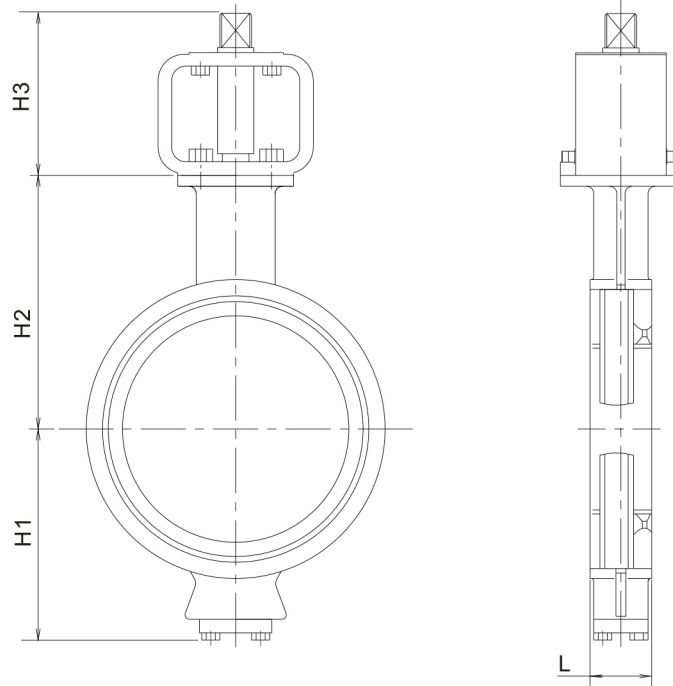
口径 Size	状态 State	AT00SR												AW00SR		AH00SR		
		20	25	30	35	40	45	50	55	60	65	70	80	AW 20	AW 28	400	500	600
200	Shut	---	---	---	---	---	---	---	---	---	---	---	4.8	3.6	---	---	---	---
	△P	---	---	---	---	---	---	---	---	---	---	---	1.08	0.84	---	---	---	---
250	Shut	---	---	---	---	---	---	---	---	---	---	---	1.8	1.2	7.2	9	---	---
	△P	---	---	---	---	---	---	---	---	---	---	---	0.36	0.24	1.56	1.44	---	---
300	Shut	---	---	---	---	---	---	---	---	---	---	---	---	---	4.2	3	---	---
	△P	---	---	---	---	---	---	---	---	---	---	---	---	---	0.72	0.6	---	---
350	Shut	---	---	---	---	---	---	---	---	---	---	---	---	---	2.4	1.8	6	---
	△P	---	---	---	---	---	---	---	---	---	---	---	---	---	0.36	0.36	1.2	---
400	Shut	---	---	---	---	---	---	---	---	---	---	---	---	---	0.6	---	6.6	---
	△P	---	---	---	---	---	---	---	---	---	---	---	---	---	0.12	---	1.08	---
450	Shut	---	---	---	---	---	---	---	---	---	---	---	---	---	---	---	5.4	6.6
	△P	---	---	---	---	---	---	---	---	---	---	---	---	---	---	---	0.72	1.08
500	Shut	---	---	---	---	---	---	---	---	---	---	---	---	---	---	---	4.2	5.4
	△P	---	---	---	---	---	---	---	---	---	---	---	---	---	---	---	0.48	0.72
600	Shut	---	---	---	---	---	---	---	---	---	---	---	---	---	---	---	1.8	4.2
	△P	---	---	---	---	---	---	---	---	---	---	---	---	---	---	---	0.24	0.48

外形尺寸 **Dimensions**

1. 阀本体外形尺寸

Dimension and Weight of Body

1). 对夹式阀本体外形尺寸



标准型上阀盖阀体尺寸

1. Body Rate: PN20/ANSI150Lb RF

口径 Caliber		尺寸 Demension			
mm	inch	L	H1	H2	H3
80	3	49	120	162	60
100	4	56	130	172	60
125	5	64	135	190	80
150	6	70	137	205	80
200	8	71	171	240	80
250	10	76	210	280	100
300	12	83	246	310	100
350	14	92	295	340	100
400	16	102	315	380	100
450	18	114	350	420	130
500	20	127	380	450	130
600	24	154	480	530	130
700	28	165	520	580	145
800	32	190	540	620	145
900	36	216	620	700	145
1000	40	222	675	760	145

2. Body Rate: PN50/ANSI300Lb RF

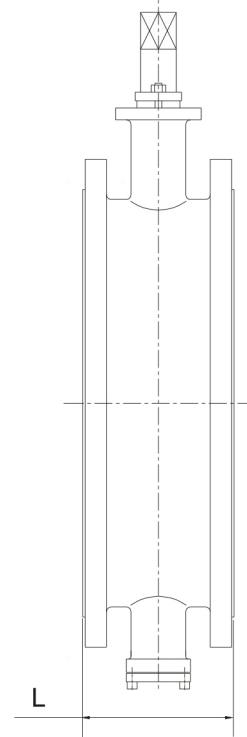
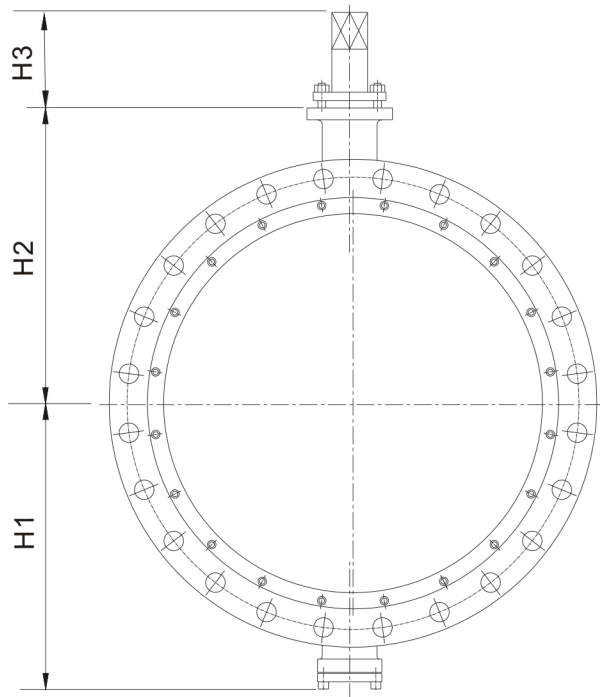
口径 Caliber		尺寸 Demension			
mm	inch	L	H1	H2	H3
80	3	49	120	162	60
100	4	56	130	172	60
125	5	64	135	190	80
150	6	92	171	240	100
200	8	102	195	255	100
250	10	114	230	290	100
300	12	114	265	330	130
350	14	127	310	375	130
400	16	140	345	400	130
450	18	152	370	440	150
500	20	165	405	485	150
600	24	178	495	570	150
700	28	209	580	650	160
800	32	241	630	680	160
900	36	260	700	730	180
1000	40	300	720	760	200

3. Body Rate: PN110/ANSI600Lb RF

口径 Caliber		尺寸 Demension			
mm	inch	L	H1	H2	H3
150	6	140	190	245	100
200	8	152	240	305	130
250	10	165	265	330	130
300	12	178	305	370	150
350	14	190	171	240	80
400	16	216	365	440	150
450	18	222	400	475	150
500	20	229	425	500	150
600	24	267	495	570	180
700	28	292	580	640	180
800	32	318	660	700	200

2). 法兰式阀本体外形尺寸

Flange Type



标准型上阀盖阀体尺寸

1. Body Rate: PN20/ANSI150Lb RF

口径 Caliber		尺寸 Demension			
mm	inch	L	H1	H2	H3
80	3	114	125	135	60
100	4	127	125	135	60
125	5	140	137	205	80
150	6	140	137	205	80
200	8	152	171	240	80
250	10	165	210	280	100
300	12	178	246	310	100
350	14	190	295	340	100
400	16	216	315	380	100
450	18	222	350	420	130
500	20	229	380	450	130
600	24	267	480	530	130
700	28	290	520	580	145
800	32	318	540	620	145
900	36	370	620	700	145
1000	40	410	675	760	145

2. Body Rate: PN50/ANSI300Lb RF

口径 Caliber		尺寸 Demension			
mm	inch	L	H1	H2	H3
80	3	180	125	135	60
100	4	190	125	135	60
125	5	200	137	205	80
150	6	200	171	240	100
200	8	230	195	255	100
250	10	250	230	290	100
300	12	270	265	330	130
350	14	290	310	375	130
400	16	310	345	400	130
450	18	330	370	440	150
500	20	350	405	485	150
600	24	390	495	570	150
700	28	420	580	650	160
800	32	450	630	680	160
---	---	---	---	---	---
---	---	---	---	---	---

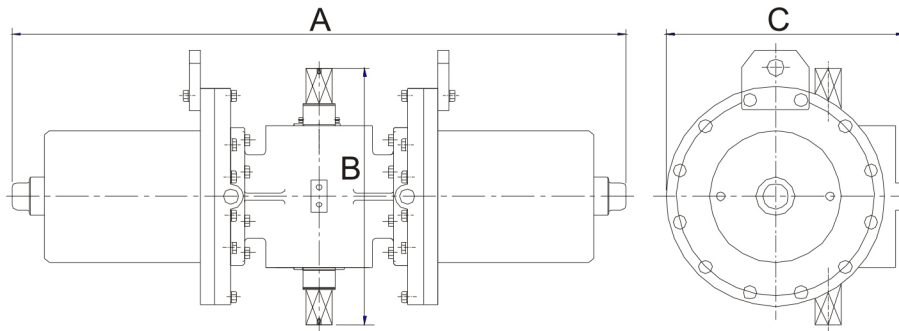
3. Body Rate: PN110/ANSI600Lb RF

口径 Caliber		尺寸 Demension			
mm	inch	L	H1	H2	H3
150	6	230	190	245	100
200	8	250	240	305	130
250	10	270	265	330	130
300	12	310	305	370	150
350	14	330	330	395	150
400	16	350	365	440	150
450	18	375	400	475	150
500	20	400	425	500	150
600	24	450	495	570	180
700	28	610	580	640	180
800	32	650	660	700	200

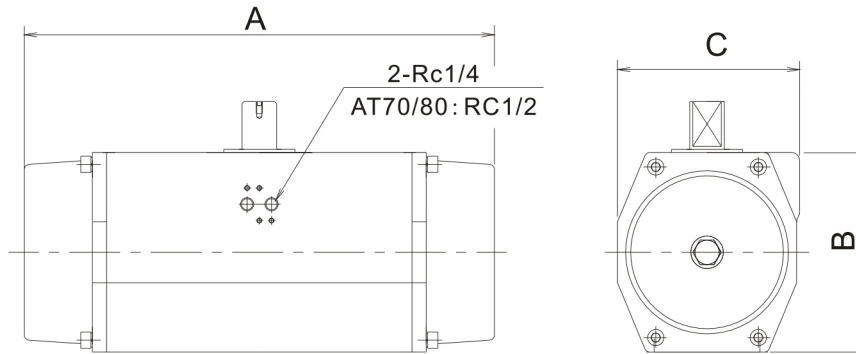
4. Body Rate: PN160/ANSI900Lb RTJ

200	8	275	260	310	140
250	10	325	285	330	140
300	12	375	320	385	150
350	14	425	400	470	160
400	16	475	425	480	180
450	18	500	470	515	200
500	20	575	500	570	200
600	24	675	590	650	230

3. 执行机构 Actuator Data



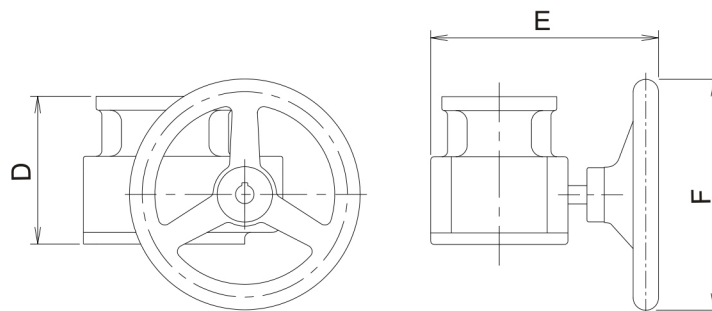
AW00执行机构



AT00执行机构

AT执行机构尺寸 Dimension		AT00											AW00		
		AT20	AT25	AT30	AT35	AT40	AT45	AT50	AT55	AT60	AT65	AT70	AT80	AW20	AW28
A		202	230	271	308	360	389	464	438	576	621	684	1350	1120	1360
B		100	110	125	142	155	175	196	230	240	300	330	500	440	590
C		85	98	110	128	140	161	176	191	220	251	350	490	370	490
重量 Weight	单作用SR	3.1	4.5	6.8	9.9	13.5	17.5	23.7	31.6	52	64	108	190	185	400
	双作用DA	2.8	4.1	5.9	8.7	11.7	15	20.5	25	44	53	90	165	140	280

4. 手动机构 Hand Wheel Data



手动机构尺寸 Dimension	RD40	RD50	RD60	RD70	与AT气动机构配合 Cooperate with AT act. According to the type
D	110	128	146	166	
E	200	240	336	520	
F	160	300	430	600	
重量 Weight	10	22	35	53	

公称压力对照表

Nominal Pressure Corresponding Table

公称压力等级 Rating	L级 L Rating	M级 M Rating	H级 H Rating			
中国标准 CNS	PN1.6	PN4.0	PN6.3 PN10.0			
美国标准 AMS	ANSI150#	ANSI300#	ANSI600#	ANSI900#	ANSI1500	ANSI2500#
日本标准 JPS	JIS 10K	JIS 20K 30K	JIS40K	JIS63K		

由于各国在定义温度压力时选择不同的温度基准,表中各级别对应的等级只是近似的,各标准的公称压力等级下的温度-压力使用范围请参阅相应标准.

Because of the temperature-pressure corresponds the different STD, the corresponding ratings are approximate. Please consult the temperature-pressure according to the corresponding STD.

Utmost[®] 艾坦姆流体控制技术（北京）有限公司
Utmost Flow Control Tech.(Beijing) Co.,Ltd

地址：北京市顺义区仁和地区临河村前街29号
电话：010-80490446
传真：010-61406990-800
邮编：101300

Add: No.29 of Renhe Qianjie, Renhe Industrial Park, Shunyi district
Tel: 010-80490446
Fax: 010-80490446-800
P.C: 101300
Http: www.utmost-valve.com